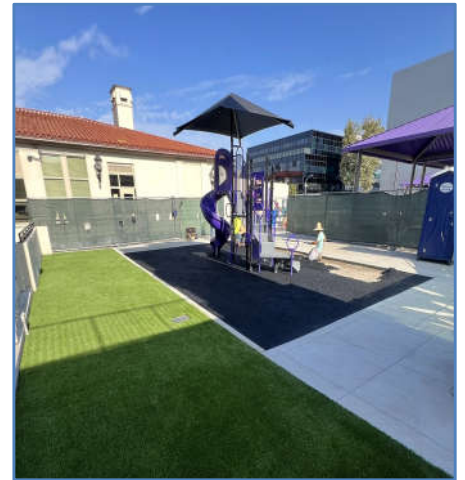
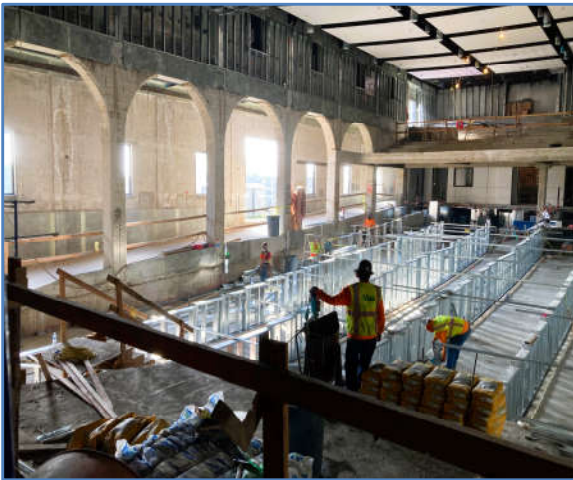


BEVERLY HILLS UNIFIED SCHOOL DISTRICT

2008 General Obligation Bond & 2018 General Obligation Bond Authorizations

Measures E & BH



Citizens' Bond Oversight Committee Report

District Financials From Inception to 1/7/2025

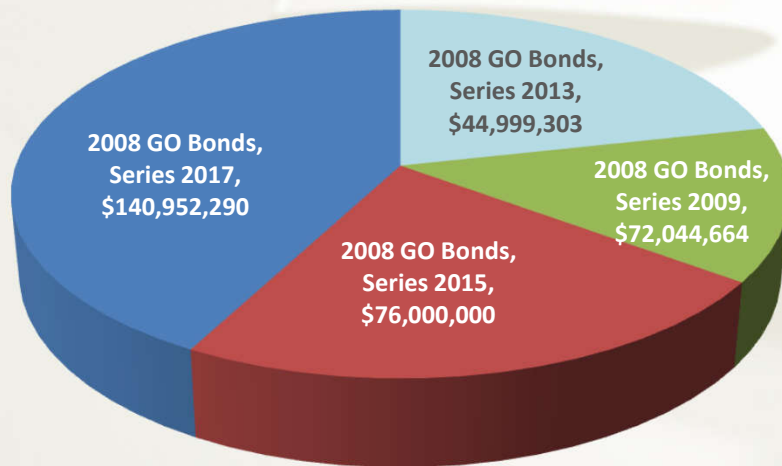
January 23, 2025 Meeting



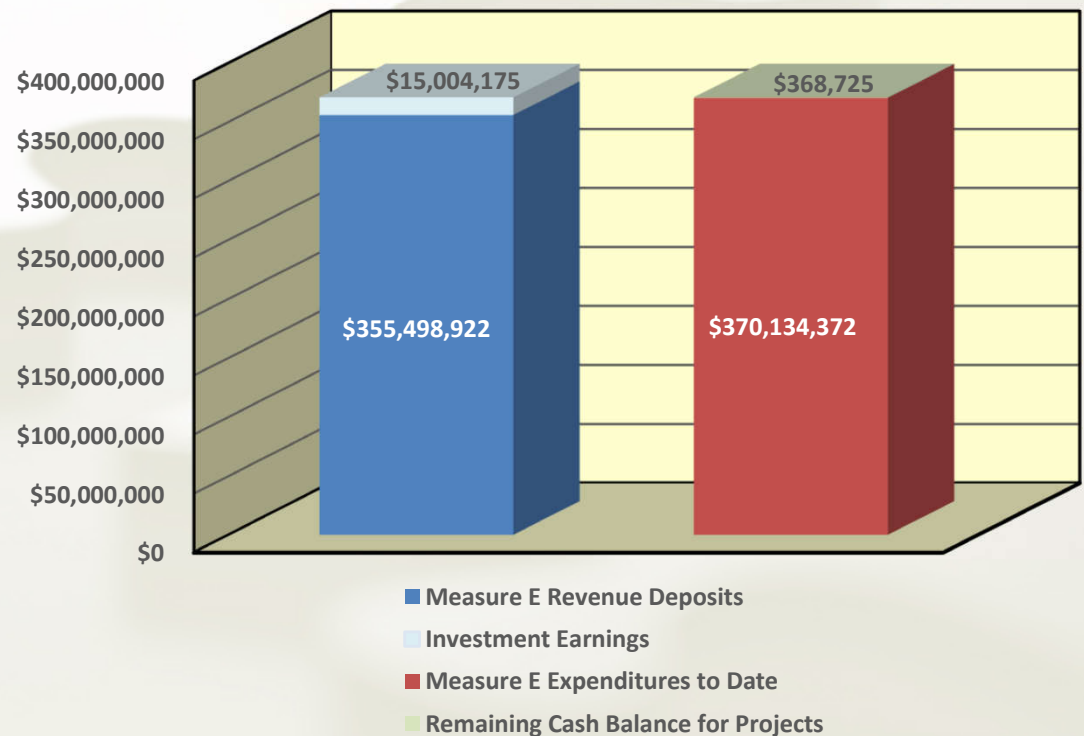
MEASURE E General Obligation Bonds Bond Financial Summary

The voters of the Beverly Hills Unified School District (the “District”) authorized Measure E G.O. Bonds in the amount of \$334,000,000 on November 4, 2008. Funds received from the sale of the bonds are to be used to provide safe and modernized school facilities; make structural seismic safety repairs; upgrade, repair, and reconstruct aging classrooms, infrastructure, multi-use, gyms, libraries, science and technology labs, roofing, plumbing, heating, ventilation and electrical systems; renovate Beverly Hills Unified School District schools to better protect students and staff from unauthorized entry, security risks and natural disasters.

\$334 Million Measure E Breakdown



Measure E Total Revenue = \$370,503,098



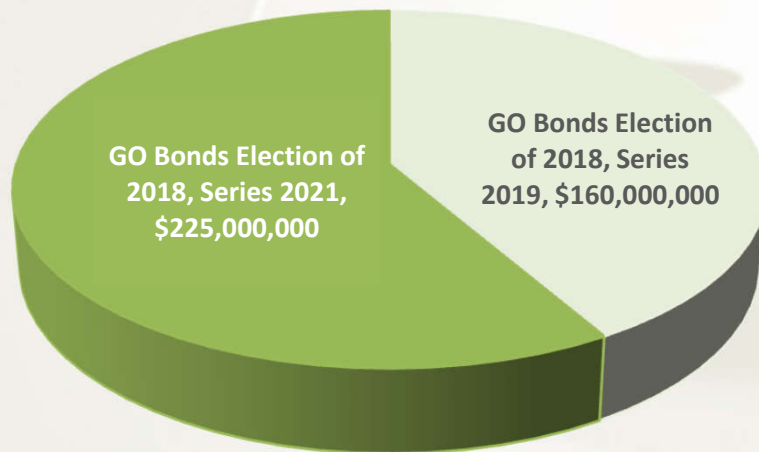
* Includes revenue from other local funding sources, including State grants



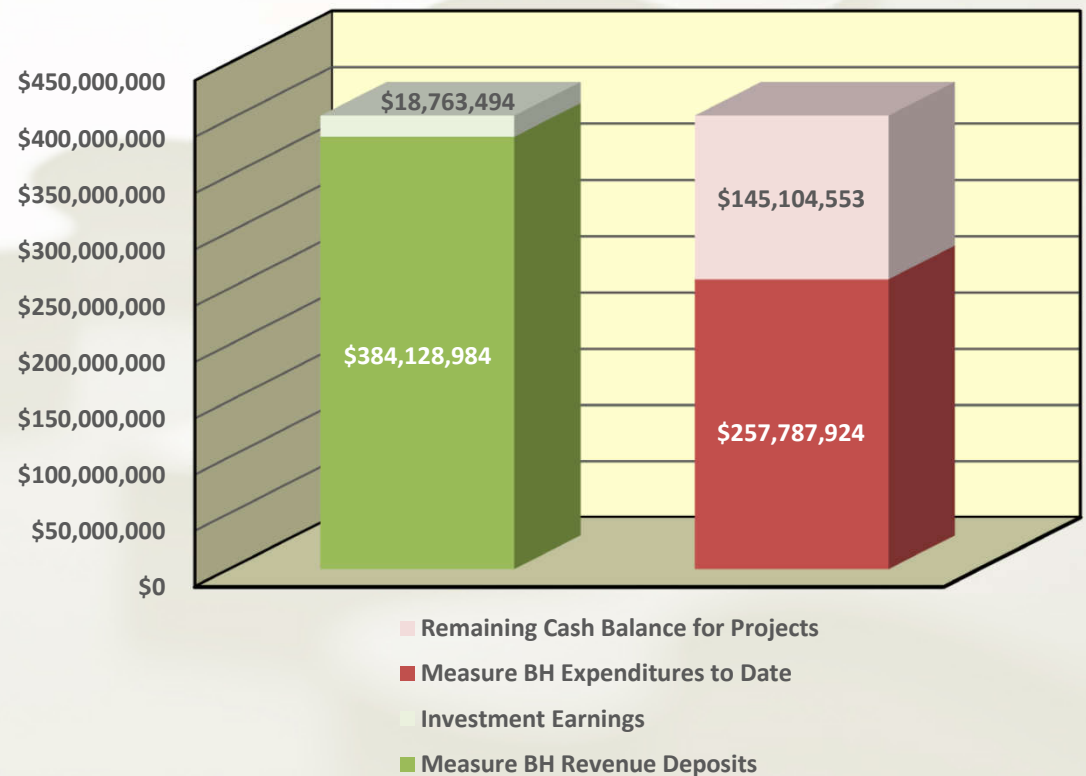
MEASURE BH General Obligation Bonds Bond Financial Summary

The voters of the Beverly Hills Unified School District (the “District”) authorized Measure BH G.O. Bonds in the amount of \$385,000,000 on June 5, 2018. Funds received from the sale of the bonds are to be used to upgrade/replace inefficient heating, cooling/electrical systems, classrooms, libraries/science labs, deteriorating restrooms/leaky roofs, provide modern classroom technology, science equipment and to upgrade, construct and acquire classrooms, facilities, sites and equipment.

\$385 Million Measure BH Breakdown



Measure BH Total Revenue = \$402,892,477





MEASURE E & MEASURE BH Bonds CUMULATIVE Expenditure Backup

**MEASURE E & BH CUMULATIVE
Expenditures from
Inception to January 7, 2025**

MEASURE E & MEASURE BH EXPENDITURE SUMMARY BY SCHOOL CAMPUS

No.	District Project Name	COMBINED Budget From Measure E & Measure BH	MEASURE E & MEASURE BH Expenditures Up to 9/26/2024	MEASURE E & MEASURE BH Expenditures From 9/27/24 to 1/7/2025	COMBINED MEASURE E & MEASURE BH EXPENDITURES	REMAINING COST TO COMPLETE
A		B	C	D	E	F (B + E)
BEVERLY HILLS High School Campus Improvements:						
1	3050000-90027 Beverly Hills HS - Modernization (CLOSED)	\$1,798,813.34	(\$1,798,813.34)	\$0.00	(\$1,798,813.34)	\$0.00
2	3050000-91600 Beverly Hills HS - Mod. (Planning All Buildings)	33,148,141.98	(32,644,448.56)	0.00	(32,644,448.56)	503,693.42
3	3050000-91601 Beverly Hills HS - C03 New Kitchen Hood - Culinary (CLOSED)	209,689.92	(209,689.92)	0.00	(209,689.92)	0.00
4	3050000-91603 Beverly Hills HS - Modernization (Bldgs. B1 & B2)	74,892,497.62	(74,892,497.62)	0.00	(74,892,497.62)	0.00
5	3050000-91604 Beverly Hills HS - Modernization (Bldgs. B3 & B4)	154,234,604.00	(112,096,508.20)	(4,079,446.23)	(116,175,954.43)	38,058,649.57
6	3050000-91608 Beverly Hills HS - Building C, Retaining Walls & New Drop-Off Area	76,774,031.32	(4,543,220.85)	(1,470,236.33)	(6,013,457.18)	70,760,574.14
7	3050000-91606 Beverly Hills HS - IDENTIFY	8,584.20	(8,584.20)	0.00	(8,584.20)	0.00
8	3050000-91609 Beverly Hills HS - South Site	15,668,011.33	(15,668,011.33)	0.00	(15,668,011.33)	0.00
9	3050000-91610 Beverly Hills HS - Seismic	1,190,916.52	(1,190,916.52)	0.00	(1,190,916.52)	0.00
10	3050000-91612 Beverly Hills HS - DLR Facilities Hardship (CLOSED)	43,057.50	(43,057.50)	0.00	(43,057.50)	0.00
11	3050000-91616 Beverly Hills HS - Swim Gym Renovation	1,625,188.95	(1,625,188.95)	0.00	(1,625,188.95)	0.00
12	3050000-91617 Beverly Hills HS - South Site - Athletic Fields & Parking Lot	34,500,652.00	(2,270,109.28)	(178,885.73)	(2,448,995.01)	32,051,656.99
13	3050000-91619 Beverly Hills HS - Grand Lawn	5,000,000.00	(309,546.89)	(61,951.38)	(371,498.27)	4,628,501.73
14	3050000-91618 Beverly Hills HS - Upper - Athletic Fields	18,050,243.41	(1,142,650.16)	(177,838.49)	(1,320,488.65)	16,729,754.76
	Campus Total:	\$417,144,432.09	(\$248,443,243.32)	(\$5,968,358.16)	(\$254,411,601.48)	\$162,732,830.61
BEVERLY VISTA Elementary School Campus Improvements:						
15	2510000-90029 Beverly Vista - Building B Phase III (CLOSED)	\$436,585.49	(\$436,585.49)	\$0.00	(\$436,585.49)	\$0.00
16	2510000-91100 Beverly Vista - Modernization	3,468,167.19	(3,468,167.19)	0.00	(3,468,167.19)	0.00
17	2510000-91103 Beverly Vista - DSA Closeout (CLOSED)	6,932.30	(6,932.30)	0.00	(\$6,932.30)	0.00
18	2510000-91105 Beverly Vista - Mod. - Priority 3 (CLOSED)	80,181.74	(80,181.74)	0.00	(\$80,181.74)	0.00
19	2510000-91107 Beverly Vista - Shade Structure (CLOSED)	74,554.09	(74,554.09)	0.00	(\$74,554.09)	0.00
	Campus Total:	\$4,066,420.81	(\$4,066,420.81)	\$0.00	(\$4,066,420.81)	\$0.00
EL RODEO Elementary School Campus Improvements:						
20	1020000-90034 El Rodeo - ER Modernization (Bldgs. A, B, C & D) (CLOSED)	\$669,929.03	(\$669,929.03)	\$0.00	(\$669,929.03)	\$0.00
21	1020000-90100 El Rodeo - Cabling for Wireless (CLOSED)	32,549.82	(32,549.82)	0.00	(32,549.82)	0.00
22	1020000-91200 El Rodeo - ER Modernization	162,223,559.96	(153,126,835.09)	(6,388,755.36)	(159,515,590.45)	2,707,969.51
23	1020000-91201 El Rodeo - Auditorium Ceiling Upgrade (CLOSED)	160,588.55	(160,588.55)	0.00	(160,588.55)	0.00
24	1020000-91203 El Rodeo - DSA Closeout (CLOSED)	81,217.69	(81,217.69)	0.00	(81,217.69)	0.00
25	1020000-91205 El Rodeo - Modernization Priority 3 (CLOSED)	975,851.25	(975,851.25)	0.00	(975,851.25)	0.00
26	1020000-91206 El Rodeo - Phylmar (DTSC) (CLOSED)	1,036,994.85	(1,036,994.85)	0.00	(1,036,994.85)	0.00
27	1020000-91210 El Rodeo - Seismic (CLOSED)	221,591.87	(221,591.87)	0.00	(221,591.87)	0.00
28	1020000-91212 El Rodeo - Site Improvement	15,603.50	(15,603.50)	0.00	(15,603.50)	0.00
29	1020000-91220 El Rodeo - New Construction (CLOSED)	9,093.40	(9,093.40)	0.00	(9,093.40)	0.00
	Campus Total:	\$165,426,979.92	(\$156,330,255.05)	(\$6,388,755.36)	(\$162,719,010.41)	\$2,707,969.51

MEASURE E & MEASURE BH EXPENDITURE SUMMARY BY SCHOOL CAMPUS

No.	District Project Name	COMBINED Budget From Measure E & Measure BH	MEASURE E & MEASURE BH Expenditures Up to 9/26/2024	MEASURE E & MEASURE BH Expenditures From 9/27/24 to 1/7/2025	COMBINED MEASURE E & MEASURE BH EXPENDITURES	REMAINING COST TO COMPLETE
A		B	C	D	E	F (B + E)
HAWTHORNE Elementary School Campus Improvements:						
30	1030000-90039 Hawthorne - Modernization (CLOSED)	\$668,442.78	(\$668,442.78)	\$0.00	(\$668,442.78)	\$0.00
31	1030000-90100 Hawthorne - Cabling for wireless (CLOSED)	39,409.03	(39,409.03)	0.00	(39,409.03)	0.00
32	1030000-91300 Hawthorne - Auditorium/Mod. (Planning)	4,970,491.59	(4,970,491.59)	0.00	(4,970,491.59)	0.00
33	1030000-91301 Hawthorne - Auditorium Ceiling Upgrade (CLOSED)	372,028.34	(372,028.34)	0.00	(372,028.34)	0.00
34	1030000-91303 Hawthorne - DSA Closeout (CLOSED)	15,405.68	(15,405.68)	0.00	(15,405.68)	0.00
35	1030000-91304 Hawthorne - Chiller/Cooling Tower Replac. (CLOSED)	470,226.60	(470,226.60)	0.00	(470,226.60)	0.00
36	1030000-91305 Hawthorne - Modernization (CLOSED)	415,529.15	(415,529.15)	0.00	(415,529.15)	0.00
37	1030000-91310 Hawthorne - Seismic (CLOSED)	448,143.60	(448,143.60)	0.00	(448,143.60)	0.00
	Campus Total:	\$7,399,676.77	(\$7,399,676.77)	\$0.00	(\$7,399,676.77)	\$0.00
HORACE MANN Elementary School Campus Improvements:						
38	1040000-90044 Horace Mann - Modernization (Building A) (CLOSED)	\$1,566,755.33	(\$1,566,755.33)	\$0.00	(\$1,566,755.33)	\$0.00
39	1040000-90046 Horace Mann - Legal Fees (CLOSED)	225.00	(225.00)	0.00	(225.00)	0.00
40	1040000-90100 Horace Mann - Cabling for wireless (CLOSED)	21,241.89	(21,241.89)	0.00	(21,241.89)	0.00
41	1040000-91400 Horace Mann - Modernization (Building A)	29,848,688.37	(29,847,488.37)	0.00	(29,847,488.37)	1,200.00
42	1040000-91401 Horace Mann - Interim Housing (CLOSED)	178,983.86	(178,983.86)	0.00	(178,983.86)	0.00
43	1040000-91402 Horace Mann - Auditorium Ceiling Replace (CLOSED)	4,575,704.41	(4,575,704.41)	0.00	(4,575,704.41)	0.00
44	1040000-91403 Horace Mann - DSA Closeout (CLOSED)	36,247.21	(36,247.21)	0.00	(36,247.21)	0.00
45	1040000-91409 Horace Mann - Shades Structure	22,639.53	(22,639.53)	0.00	(22,639.53)	0.00
46	1040000-91410 Horace Mann - Seismic (CLOSED)	370,216.91	(370,216.91)	0.00	(370,216.91)	0.00
47	1040000-91420 Horace Mann - New Construction (CLOSED)	47,785,432.30	(47,785,432.30)	0.00	(47,785,432.30)	0.00
48	1040000-91421 Horace Mann - Demo of Rotunda (CLOSED)	25,029.18	(25,029.18)	0.00	(25,029.18)	0.00
49	1040000-91423 Horace Mann - Lunch Shelter/Courtyard (CLOSED)	101.61	(101.61)	0.00	(101.61)	0.00
50	1040000-91440 Horace Mann - Technology (CLOSED)	312,475.35	(312,475.35)	0.00	(312,475.35)	0.00
	Campus Total:	\$84,743,740.95	(\$84,742,540.95)	\$0.00	(\$84,742,540.95)	\$1,200.00
DISTRICT-WIDE TECHNOLOGY Improvements:						
51	0000011-00000 Technology	\$2,412,318.60	(\$2,412,318.60)	\$0.00	(\$2,412,318.60)	\$0.00
52	0000011-91000 Technology - Project Support	85,433.08	(85,433.08)	0.00	(85,433.08)	0.00
53	0000011-91040 Technology - District Wide	5,062,009.75	(5,062,009.75)	0.00	(5,062,009.75)	0.00
54	5110000-91040 One-to-One - Technology	13,166,467.29	(5,718,441.53)	(212,862.82)	(5,931,304.35)	7,235,162.94
	Campus Total:	\$20,726,228.72	(\$13,278,202.96)	(\$212,862.82)	(\$13,491,065.78)	\$7,235,162.94

MEASURE E & MEASURE BH EXPENDITURE SUMMARY BY SCHOOL CAMPUS

No.	District Project Name		COMBINED Budget From Measure E & Measure BH	MEASURE E & MEASURE BH Expenditures Up to 9/26/2024	MEASURE E & MEASURE BH Expenditures From 9/27/24 to 1/7/2025	COMBINED MEASURE E & MEASURE BH EXPENDITURES	REMAINING COST TO COMPLETE
A			B	C	D	E	F (B + E)
OIL WELL Related Expenditures:							
55	0000017-91700	Venoco Oil Wells	\$1,349,976.97	(\$1,349,976.97)	\$0.00	(\$1,349,976.97)	\$0.00
56	3050000-91700	Venoco Oil Wells	29,818,252.25	(29,818,252.25)	0.00	(29,818,252.25)	0.00
57	3050000-91701	Beverly Hills HS - Legacy Wells	542,988.22	(542,988.22)	0.00	(542,988.22)	0.00
58	0000017-91702	MTA Oil Wells Abandonment	14,435.25	(14,435.25)	0.00	(14,435.25)	0.00
59	3050000-91702	Beverly Hills HS - MTA Oil Well Abandonment	21,143,424.02	(21,093,424.02)	0.00	(21,093,424.02)	50,000.00
60	5810000-91702	MTA Oil Well Abandonment	13,988.33	(13,988.33)	0.00	(13,988.33)	0.00
61	1020000-91702	El Rodeo - MTA Oil Well Abandonment (CLOSED)	20,429.90	(20,429.90)	0.00	(20,429.90)	0.00
62	9900000-91702	MTA Oil Well Abandonment	(19,680,984.95)	19,680,984.95	0.00	19,680,984.95	0.00
63	3050000-91703	Beverly Hills HS - Venoco Water Leak Cleanup	3,809,733.58	(3,809,733.58)	0.00	(3,809,733.58)	0.00
64	3050000-91704	Beverly Hills HS - Legacy Oil Wells	109,685.74	(59,685.74)	0.00	(59,685.74)	50,000.00
65	9900000-91700	District Wide - Oil Well	(25,091.39)	25,091.39	0.00	25,091.39	0.00
	Campus Total:		\$37,116,837.92	(\$37,016,837.92)	\$0.00	(\$37,016,837.92)	\$100,000.00
DISTRICT-WIDE Improvements:							
66	Multiple Codes	District-Wide Facilities Planning/DSA Closeout, Misc.	\$42,257,985.91	(\$38,018,383.17)	(\$455,104.47)	(\$38,473,487.64)	\$3,784,498.27
67	0000017-91008	District - Security	5,567,719.28	(5,567,719.28)	0.00	(5,567,719.28)	0.00
68	5810000-91004	MTA	20,033,935.32	(20,033,935.32)	0.00	(20,033,935.32)	0.00
	Campus Total:		\$67,859,640.51	(\$63,620,037.77)	(\$455,104.47)	(\$64,075,142.24)	\$3,784,498.27
COMBINED TOTAL FOR "ACTIVE" & "COMPLETED" PROJECTS:			\$804,483,957.69	(\$614,897,215.55)	(\$13,025,080.81)	(\$627,922,296.36)	\$176,561,661.33



MEASURE E & MEASURE BH Bonds CUMULATIVE Expenditure Backup

**MEASURE E & BH Expenditures from
September 27, 2024 to January 7, 2025**

(SUMMARY MODE)

MEASURE E & MEASURE BH EXPENDITURES FROM 9/27/2024 TO 1/7/2025 (SUMMARY MODE)

Project: 1020000-91200 - El Rodeo - ER Modernization		
Vendor	Expenditure	Description
BSN Sports	(\$2,475.24)	Furniture & Equipment
Cree Management (Operation Gate Systems)	(\$59,948.75)	Other Construction
Digital Telecommunications	(\$8,012.27)	Telecommunication Costs
Eberhard Equipment 3	(\$20,801.56)	Equipment Costs
Edgar Garza Construction	(\$4,750.00)	Construction Costs
Fast Signs LA	(\$325.00)	Custom Sign Designer
HMC Architects	(\$208,042.63)	Architect Fees
MDC Interior Solutions LLC	(\$6,488.22)	Furniture & Equipment
Mover Services, Inc.	(\$16,890.00)	Relocation Services
Paramount Waterproofing and Restoration Inc	(\$23,081.00)	Restoration
Prowest Constructors	(\$5,929,222.00)	Construction Costs
Sportsfield Specialties Inc	(\$108,718.69)	Sports Equipment Manufacturer
Project Total:	(\$6,388,755.36)	1020000-91200 - El Rodeo - ER Modernization

Project: 3050000-91604 - Beverly Hills HS - Modernization (Bldgs. B3 & B4) - 51/64311-00-007		
Vendor	Expenditure	Description
ARC Document Solutions	(\$69.09)	Printing Costs
DLR Group, Inc	(\$66,390.51)	Architect Fees
Floyd Auten Electric Inc	(\$4,095.00)	Electrical Work
Fonder-Salari, Inc	(\$113,029.25)	Construction Management
Image IV Systems, Inc.	(\$446.14)	Rentals, Leases & Repairs
Prowest Constructors	(\$2,544,401.48)	Construction Costs
RMA Group	(\$261,769.83)	Testing Costs
ReadyRefresh by Nestle	(\$337.79)	Water Delivery
Sewup Jpa C/O Keenan & Associates	(\$1,088,907.14)	Insurance Costs
Project Total:	(\$4,079,446.23)	3050000-91604 - Beverly Hills HS - Modernization (Bldgs. B3 & B4) - 51/64311-00-007

Project: 3050000-91608 - Beverly Hills HS - Building C, Retaining Walls & New Drop-Off Area		
Vendor	Expenditure	Description
DLR Group, Inc	(\$321,065.71)	Architect Fees
Environmental Audit Inc.	(\$48,716.25)	Environmental Costs
Fonder-Salari, Inc	(\$56,871.90)	Construction Management
Pacificwest Energy Solutions	(\$184,570.37)	HVAC, Controls, Lighting ...

MEASURE E & MEASURE BH EXPENDITURES FROM 9/27/2024 TO 1/7/2025 (SUMMARY MODE)

Project: 3050000-91608 - Beverly Hills HS - Building C, Retaining Walls & New Drop-Off Area		
Vendor	Expenditure	Description
Sewup Jpa C/O Keenan & Associates	(\$49,662.77)	Insurance Costs
Swinerton Builders	(\$809,349.33)	Construction Engineering
Project Total:	(\$1,470,236.33)	3050000-91608 - Beverly Hills HS - Building C, Retaining Walls & New Drop-Off Area
Project: 3050000-91617 - Beverly Hills HS - South Site - Athletic Fields & Parking Lot		
Vendor	Expenditure	Description
DLR Group, Inc	(\$178,885.73)	Architect Fees
Project Total:	(\$178,885.73)	3050000-91617 - Beverly Hills HS - South Site - Athletic Fields & Parking Lot
Project: 3050000-91618 - Beverly Hills HS - Upper - Athletic Fields		
Vendor	Expenditure	Description
Erickson-Hall Construction	(\$127,372.09)	Construction
Fonder-Salari, Inc	(\$47,842.40)	Construction Management
Leighton Consulting, Inc.	(\$2,624.00)	Geotech investigation/Soils testing
Project Total:	(\$177,838.49)	3050000-91618 - Beverly Hills HS - Upper - Athletic Fields
Project: 3050000-91619 - Beverly Hills HS - Grand Lawn		
Vendor	Expenditure	Description
DLR Group, Inc	(\$27,785.88)	Architect Fees
Prowest Constructors	(\$34,165.50)	Construction Costs
Project Total:	(\$61,951.38)	3050000-91619 - Beverly Hills HS - Grand Lawn
Project: 5110000-91040 - One-to-One - Technology		
Vendor	Expenditure	Description
Arey Jones Educational Solutions	(\$105,074.21)	Technology Equipment
GigaKOM	(\$8,961.61)	IT Service
SNP Networks, Inc.	(\$1,480.00)	Communications
Taft Electric	(\$27,861.00)	Electrical Contractor
Vantage Technology Consulting Group	(\$69,486.00)	Consulting Services
Project Total:	(\$212,862.82)	5110000-91040 - One-to-One - Technology
Project: 5810000-90045 - Facilities & Planning - Legal Services		
Vendor	Expenditure	Description
Best, Best & Krieger	(\$7,884.81)	Legal Fees

Project: 5810000-90045 - Facilities & Planning - Legal Services		
Vendor	Expenditure	Description
Project Total:	(\$7,884.81)	5810000-90045 - Facilities & Planning - Legal Services
Project: 5810000-91000 - Facilities & Planning		
Vendor	Expenditure	Description
Amazon Capital Services	(\$65.56)	Furniture & Equipment
B.H.U.S.D.	(\$165,417.61)	District Project Support
Beverly Hills CPR	(\$100.00)	Safety Equipment
California Financial Services	(\$18,750.00)	Program Tracking, Reporting & Compliance
Fonder-Salari, Inc	(\$166,514.26)	Construction Management
Moss Adams LLP	(\$44,237.18)	Bond Audit Services
ODP Business Solutions, LLC	(\$67.88)	Office Supplies
ReadyRefresh by Nestle	(\$233.15)	Water Delivery
Sandy Pringle Associates	(\$51,827.40)	Inspection Costs
U.S. Bank	(\$6.62)	Other Costs
Project Total:	(\$447,219.66)	5810000-91000 - Facilities & Planning
Grand Total:	(\$13,025,080.81)	Beverly Hills Unified School District



MEASURE E & MEASURE BH Bonds CUMULATIVE Expenditure Backup

**MEASURE E & BH Expenditures from
September 27, 2024 to January 7, 2025**

(DETAIL MODE)

MEASURE E & MEASURE BH EXPENDITURES FROM 9/27/2024 TO 1/7/2025 (DETAIL MODE)

Project: 1020000-91200 - El Rodeo - ER Modernization		
Vendor	Expenditure	Description
BSN Sports	(\$2,475.24)	Furniture & Equipment
Cree Management (Operation Gate Systems)	(\$59,948.75)	Other Construction
Digital Telecommunications	(\$8,012.27)	Telecommunication Costs
Eberhard Equipment 3	(\$20,801.56)	Equipment Costs
Edgar Garza Construction	(\$4,750.00)	Construction Costs
Fast Signs LA	(\$325.00)	Custom Sign Designer
HMC Architects	(\$208,042.63)	Architect Fees
MDC Interior Solutions LLC	(\$6,488.22)	Furniture & Equipment
Mover Services, Inc.	(\$16,890.00)	Relocation Services
Paramount Waterproofing and Restoration Inc	(\$23,081.00)	Restoration
Prowest Constructors	(\$5,929,222.00)	Construction Costs
Sportsfield Specialties Inc	(\$108,718.69)	Sports Equipment Manufacturer
Project Total:	(\$6,388,755.36)	1020000-91200 - El Rodeo - ER Modernization
Project: 3050000-91604 - Beverly Hills HS - Modernization (Bldgs. B3 & B4) - 51/64311-00-007		
Vendor	Expenditure	Description
ARC Document Solutions	(\$69.09)	Printing Costs
DLR Group, Inc	(\$66,390.51)	Architect Fees
Floyd Auten Electric Inc	(\$4,095.00)	Electrical Work
Fonder-Salari, Inc	(\$113,029.25)	Construction Management
Image IV Systems, Inc.	(\$446.14)	Rentals, Leases & Repairs
Prowest Constructors	(\$2,544,401.48)	Construction Costs
RMA Group	(\$261,769.83)	Testing Costs
ReadyRefresh by Nestle	(\$337.79)	Water Delivery
Sewup Jpa C/O Keenan & Associates	(\$1,088,907.14)	Insurance Costs
Project Total:	(\$4,079,446.23)	3050000-91604 - Beverly Hills HS - Modernization (Bldgs. B3 & B4) - 51/64311-00-007
Project: 3050000-91608 - Beverly Hills HS - Building C, Retaining Walls & New Drop-Off Area		
Vendor	Expenditure	Description
DLR Group, Inc	(\$321,065.71)	Architect Fees
Environmental Audit Inc.	(\$48,716.25)	Environmental Costs
Fonder-Salari, Inc	(\$56,871.90)	Construction Management
Pacificwest Energy Solutions	(\$184,570.37)	HVAC, Controls, Lighting ...

MEASURE E & MEASURE BH EXPENDITURES FROM 9/27/2024 TO 1/7/2025 (DETAIL MODE)

Project: 3050000-91608 - Beverly Hills HS - Building C, Retaining Walls & New Drop-Off Area		
Vendor	Expenditure	Description
Sewup Jpa C/O Keenan & Associates	(\$49,662.77)	Insurance Costs
Swinerton Builders	(\$809,349.33)	Construction Engineering
Project Total:	(\$1,470,236.33)	3050000-91608 - Beverly Hills HS - Building C, Retaining Walls & New Drop-Off Area
Project: 3050000-91617 - Beverly Hills HS - South Site - Athletic Fields & Parking Lot		
Vendor	Expenditure	Description
DLR Group, Inc	(\$178,885.73)	Architect Fees
Project Total:	(\$178,885.73)	3050000-91617 - Beverly Hills HS - South Site - Athletic Fields & Parking Lot
Project: 3050000-91618 - Beverly Hills HS - Upper - Athletic Fields		
Vendor	Expenditure	Description
Erickson-Hall Construction	(\$127,372.09)	Construction
Fonder-Salari, Inc	(\$47,842.40)	Construction Management
Leighton Consulting, Inc.	(\$2,624.00)	Geotech investigation/Soils testing
Project Total:	(\$177,838.49)	3050000-91618 - Beverly Hills HS - Upper - Athletic Fields
Project: 3050000-91619 - Beverly Hills HS - Grand Lawn		
Vendor	Expenditure	Description
DLR Group, Inc	(\$27,785.88)	Architect Fees
Prowest Constructors	(\$34,165.50)	Construction Costs
Project Total:	(\$61,951.38)	3050000-91619 - Beverly Hills HS - Grand Lawn
Project: 5110000-91040 - One-to-One - Technology		
Vendor	Expenditure	Description
Arey Jones Educational Solutions	(\$105,074.21)	Technology Equipment
GigaKOM	(\$8,961.61)	IT Service
SNP Networks, Inc.	(\$1,480.00)	Communications
Taft Electric	(\$27,861.00)	Electrical Contractor
Vantage Technology Consulting Group	(\$69,486.00)	Consulting Services
Project Total:	(\$212,862.82)	5110000-91040 - One-to-One - Technology
Project: 5810000-90045 - Facilities & Planning - Legal Services		
Vendor	Expenditure	Description
Best, Best & Krieger	(\$7,884.81)	Legal Fees

Project: 5810000-90045 - Facilities & Planning - Legal Services		
Vendor	Expenditure	Description
Project Total:	(\$7,884.81)	5810000-90045 - Facilities & Planning - Legal Services
Project: 5810000-91000 - Facilities & Planning		
Vendor	Expenditure	Description
Amazon Capital Services	(\$65.56)	Furniture & Equipment
Beverly Hills CPR	(\$100.00)	Safety Equipment
California Financial Services	(\$18,750.00)	Program Tracking, Reporting & Compliance
Fonder-Salari, Inc	(\$166,514.26)	Construction Management
Moss Adams LLP	(\$44,237.18)	Bond Audit Services
ODP Business Solutions, LLC	(\$67.88)	Office Supplies
ReadyRefresh by Nestle	(\$233.15)	Water Delivery
Sandy Pringle Associates	(\$51,827.40)	Inspection Costs
U.S. Bank	(\$6.62)	Other Costs
Project Total:	(\$281,802.05)	5810000-91000 - Facilities & Planning
Grand Total:	(\$12,859,663.20)	Beverly Hills Unified School District

Project: 5810000-91000 - Facilities & Planning		
Vendor	Expenditure	Description
B.H.U.S.D.	(\$165,417.61)	District Project Support
Project Total:	(\$165,417.61)	5810000-91000 - Facilities & Planning
Grand Total:	(\$165,417.61)	Beverly Hills Unified School District